



CUSTOMER:

Customer Name: ALINVEST

PROJECT:

Project Code: E2558

Project Name: ALFAGEN

DOCUMENT INFORMATION:



Document Title: Equipment Spider Diagram

Contractor File Name: 2558-03xx-GEN-E-DWG-SPD

Contractor Revision Number: A

Customer File Name: -

Customer Revision Number: -

						CONTRACTOR		CONTRACTOR dwg number 2558-03xx-GEN-E-DWG-SPD	Rev. A	Project Code E2558	Project Name ALFAGEN			
										Document Title Equipment Spider Diagram			Scale 1:1	
A	29/11/2025	INITIAL VERSION		RORI	RORI					RORI	CLIENT			
Rev.	Date	Revisions description		Designed	Draw	Approved						DATE: 29/11/2025	DATE: 29/11/2025	
1		2	3	4		5	6	7	8	9	10	11	12	

UPS RACK POWER SUPPLY

BILLET LINE #01


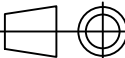
r41.31-0311-GEN-APU01-PDP01

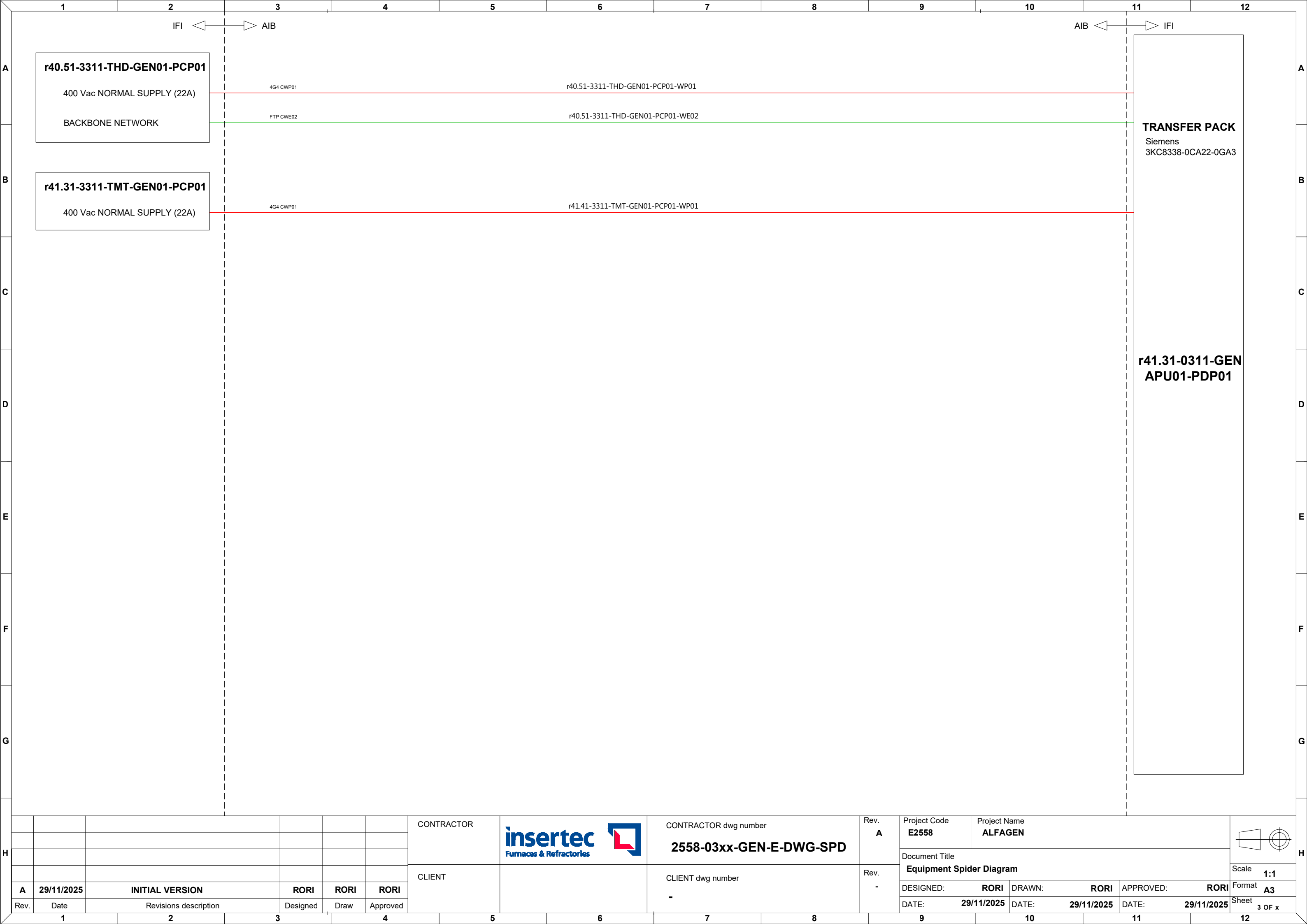
CATEGORY

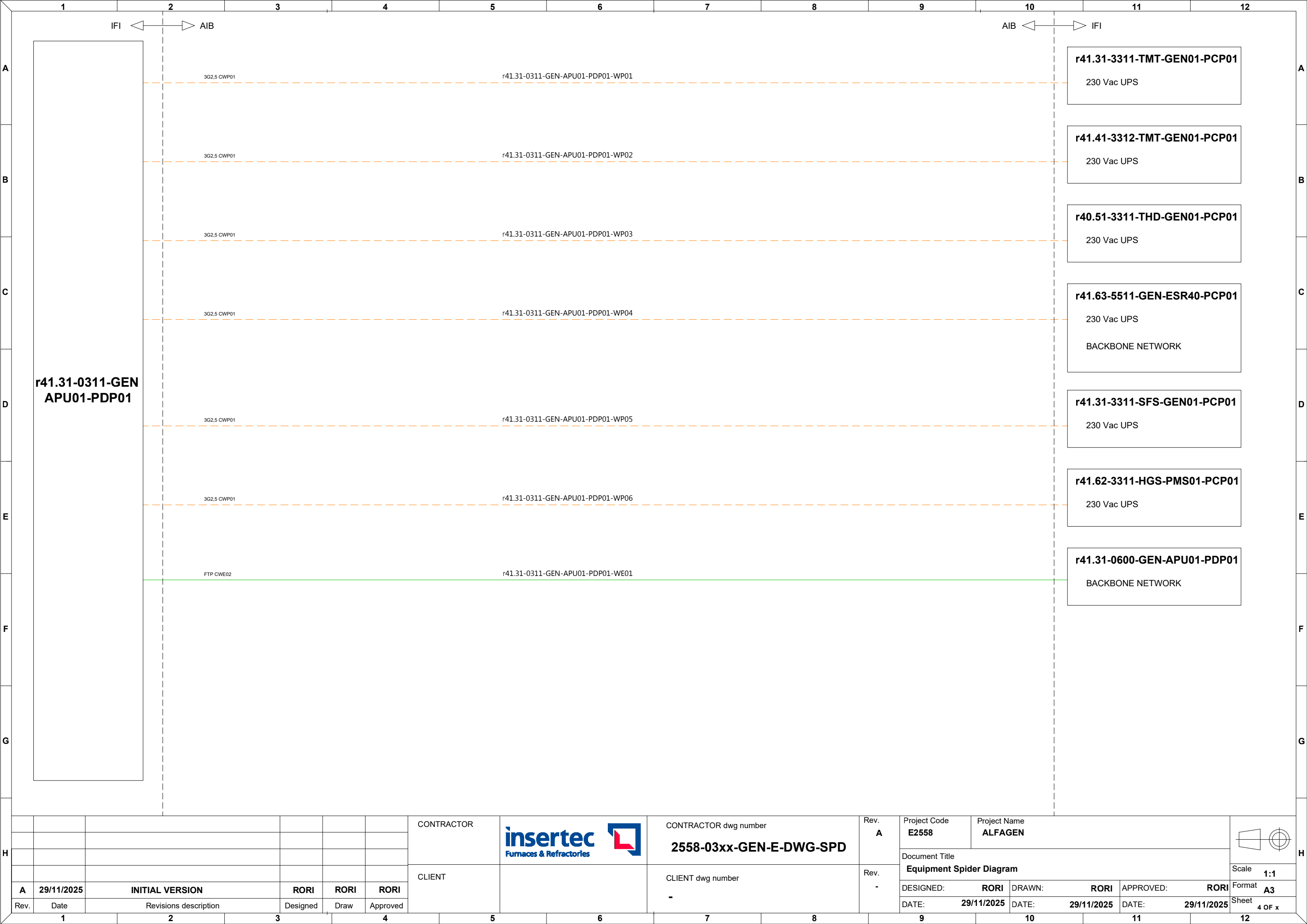
- Power cables
- CWP01: Regular power cables
 - CWP02: Shielded power cable
 - CWP03: Flexible power cables
 - CWP04: Regular high temperature power cables
 - CWP05: Shielded high temperature power cables
 - CWP06: General use power cable
- Instrumentation and control cables
- CWC01: Regular instrumentation control cables
 - CWC02: Shielded instrumentation control cables
 - CWC03: Thermocouple cable
 - CWC04: Flexible instrumentation control cables
 - CWC05: High voltage cables for ignition transformers
 - CWC06: Regular high temperature instrumentation control cables
 - CWC07: Shielded high temperature instrumentation control cables
- Communication cables
- CWE01: Fieldbus communication cable (Inside cabinets)
 - CWE02: Fieldbus communication cable (Outside cabinets)
 - CWE03: Optic fibre communication cable

LEGEND

- 400Vac Power supply
- 400Vac UPS power supply
- 230Vac Power supply
- 230Vac UPS power supply
- Regular control signals
- Analog & shielded signals
- T/C connection
- Communication connection

						CONTRACTOR		CONTRACTOR dwg number	2558-03xx-GEN-E-DWG-SPD	Rev. A	Project Code	Project Name								
											E2558	ALFAGEN								
											Document Title									
						CLIENT		CLIENT dwg number	-	Rev. -	Equipment Spider Diagram						Scale	1:1		
A	29/11/2025	INITIAL VERSION			RORI						RORI	RORI	DESIGNED:	RORI	DRAWN:	RORI	APPROVED:	RORI	Format	A3
Rev.	Date	Revisions description			Designed						Draw	Approved	DATE:	29/11/2025	DATE:	29/11/2025	DATE:	29/11/2025	Sheet	2 OF x
1		2	3	4	5	6	7	8	9	10	11	12								





UPS RACK POWER SUPPLY

BILLET LINE AUXILIARIES



r41.31-0600-GEN-APU01-PDP01

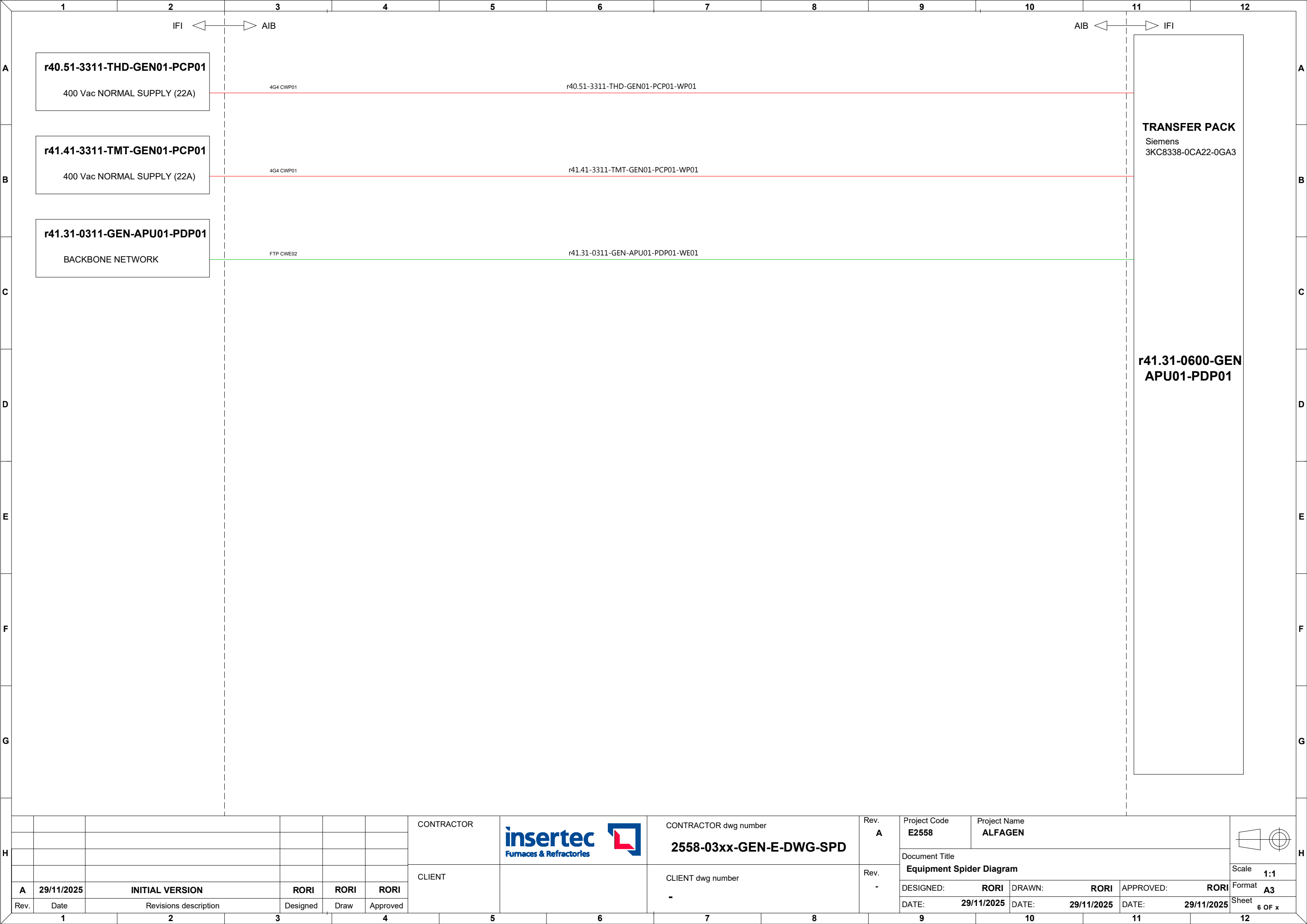
CATEGORY

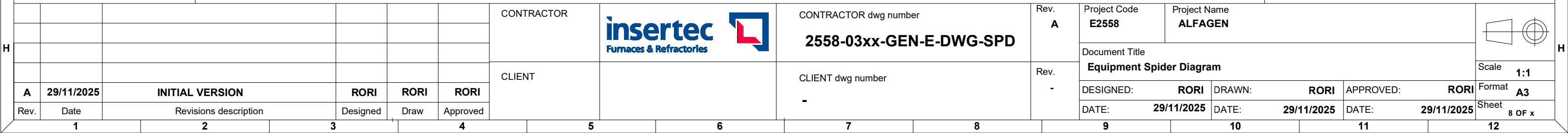
- Power cables
- CWP01: Regular power cables
 - CWP02: Shielded power cable
 - CWP03: Flexible power cables
 - CWP04: Regular high temperature power cables
 - CWP05: Shielded high temperature power cables
 - CWP06: General use power cable
- Instrumentation and control cables
- CWC01: Regular instrumentation control cables
 - CWC02: Shielded instrumentation control cables
 - CWC03: Thermocouple cable
 - CWC04: Flexible instrumentation control cables
 - CWC05: High voltage cables for ignition transformers
 - CWC06: Regular high temperature instrumentation control cables
 - CWC07: Shielded high temperature instrumentation control cables
- Communication cables
- CWE01: Fieldbus communication cable (Inside cabinets)
 - CWE02: Fieldbus communication cable (Outside cabinets)
 - CWE03: Optic fibre communication cable

LEGEND

- 400Vac Power supply
- 400Vac UPS power supply
- 230Vac Power supply
- 230Vac UPS power supply
- Regular control signals
- Analog & shielded signals
- T/C connection
- Communication connection

						CONTRACTOR		CONTRACTOR dwg number	Rev. A	Project Code	Project Name					
										E2558	ALFAGEN					
										Document Title						
						CLIENT		CLIENT dwg number	Rev. -	Equipment Spider Diagram			Scale			
A	29/11/2025	INITIAL VERSION		RORI	RORI					RORI	DESIGNED: RORI			DRAWN: RORI	APPROVED: RORI	Format
Rev.	Date	Revisions description		Designed	Draw					Approved	DATE: 29/11/2025			DATE: 29/11/2025	DATE: 29/11/2025	Sheet





rxX.XX-0331-GEN-APU01-PDP01

Power cables

CWP01: Regular power cables

CWP02: Shielded power cable

CWP03: Flexible power cables

CWP04: Regular high temperature power cables

CWP05: Shielded high temperature power cables

CWP06: General use power cable

Instrumentation and control cables

CWC01: Regular instrumentation control cables

CWC02: Shielded instrumentation control cables

CWC03: Thermocouple cable

CWC04: Flexible instrumentation control cables

CWC05: High voltage cables for ignition transformers

CWC06: Regular high temperature instrumentation control cables

CWC07: Shielded high temperature instrumentation control cables

Communication cables

CWE01: Fieldbus communication cable (Inside cabinets)

CWE02: Fieldbus communication cable (Outside cabinets)

CWE03: Optic fibre communication cable

— 400Vac Power supply

400Vac Power supply

Regular control signals

— — — 400Vac UPS power supply

- — — Analog & shielded signals

— 230Vac Power supply

_____ T/C connection

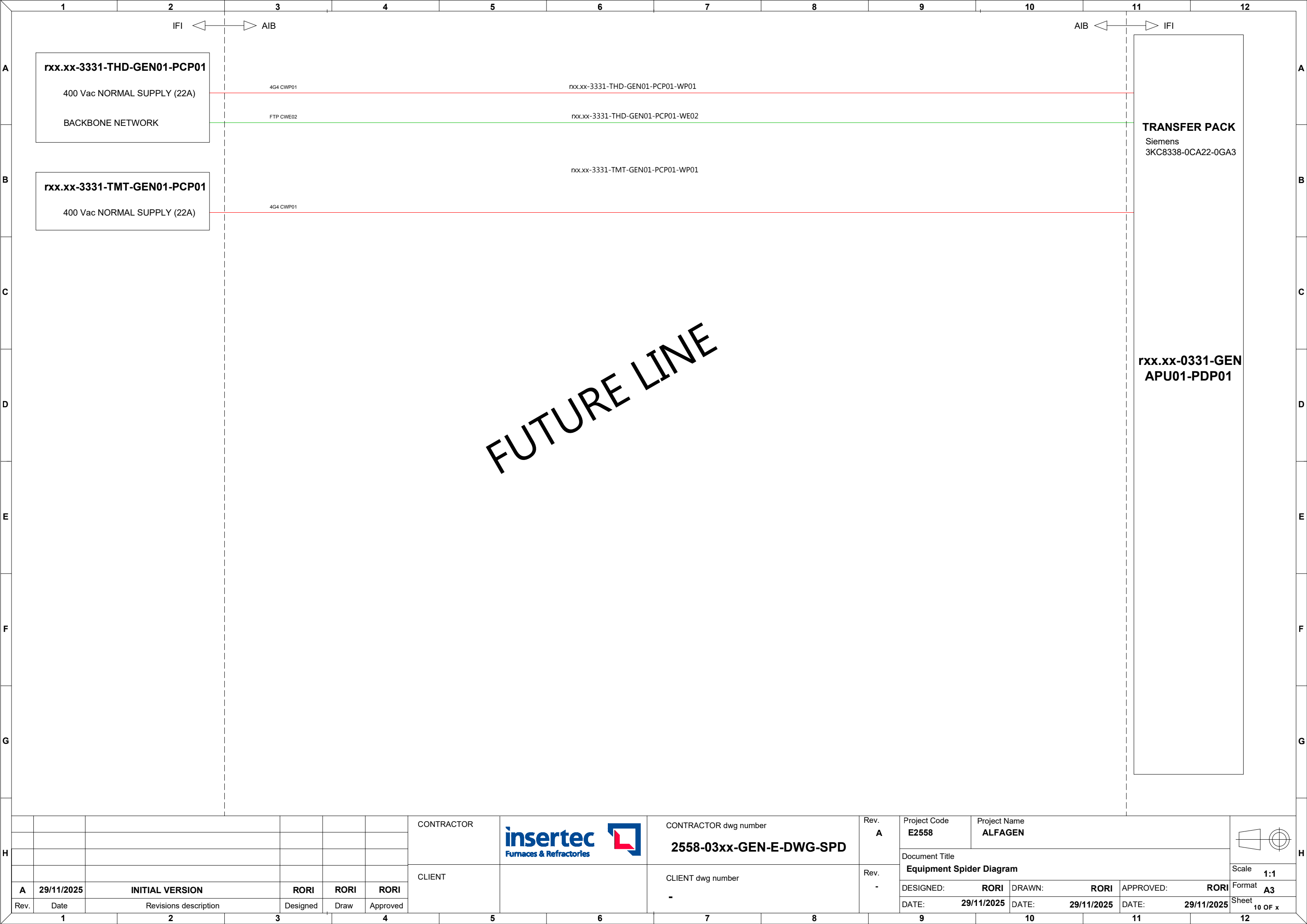
— — — 230Vac UPS power supply

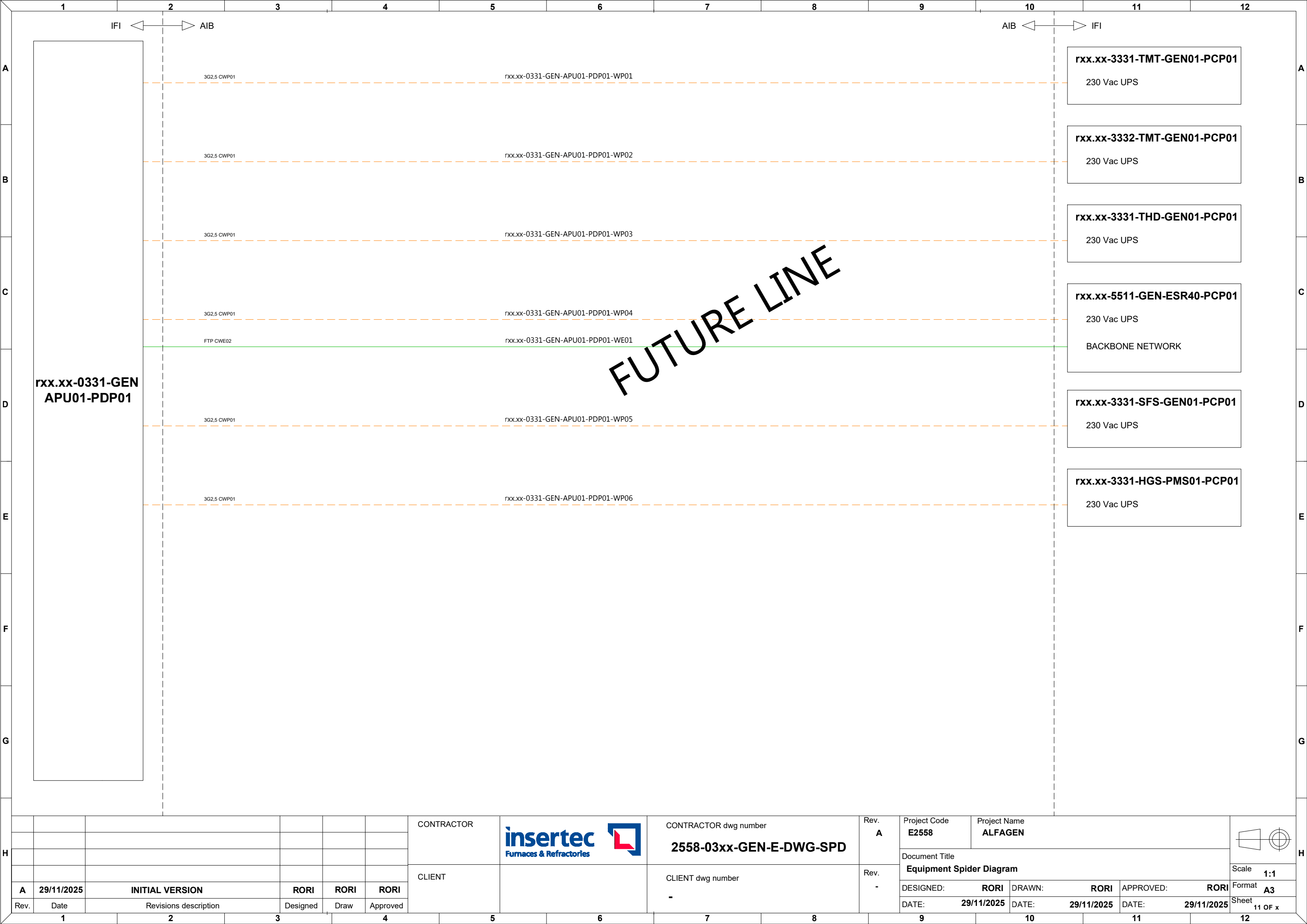
Communication connection

Scale 1:1

Format	A3
--------	-----------

Sheet 9 OF x





UPS RACK POWER SUPPLY

CASTING LINE #01


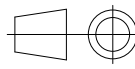
r43.31-0321-GEN-APU01-PDP01

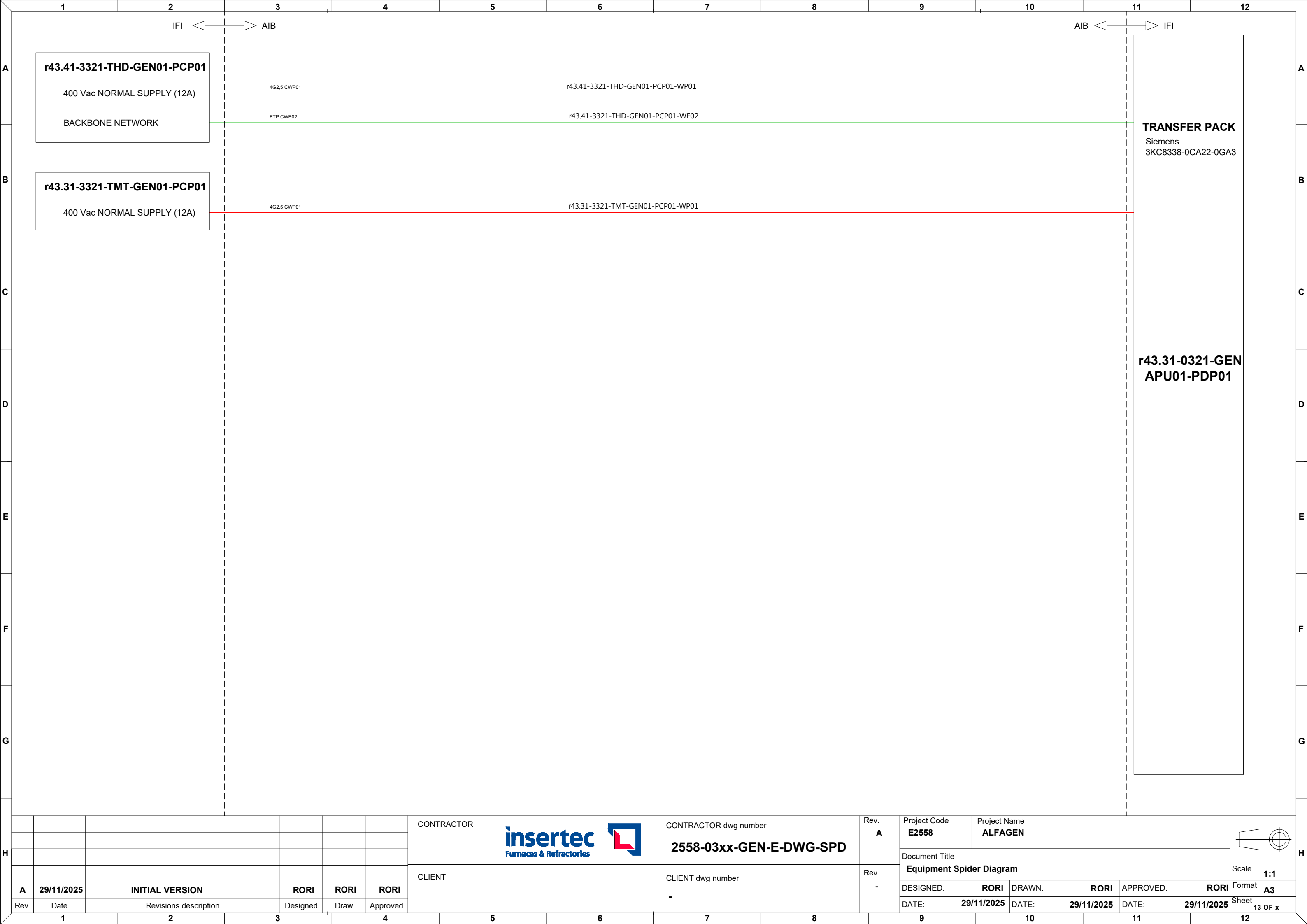
CATEGORY

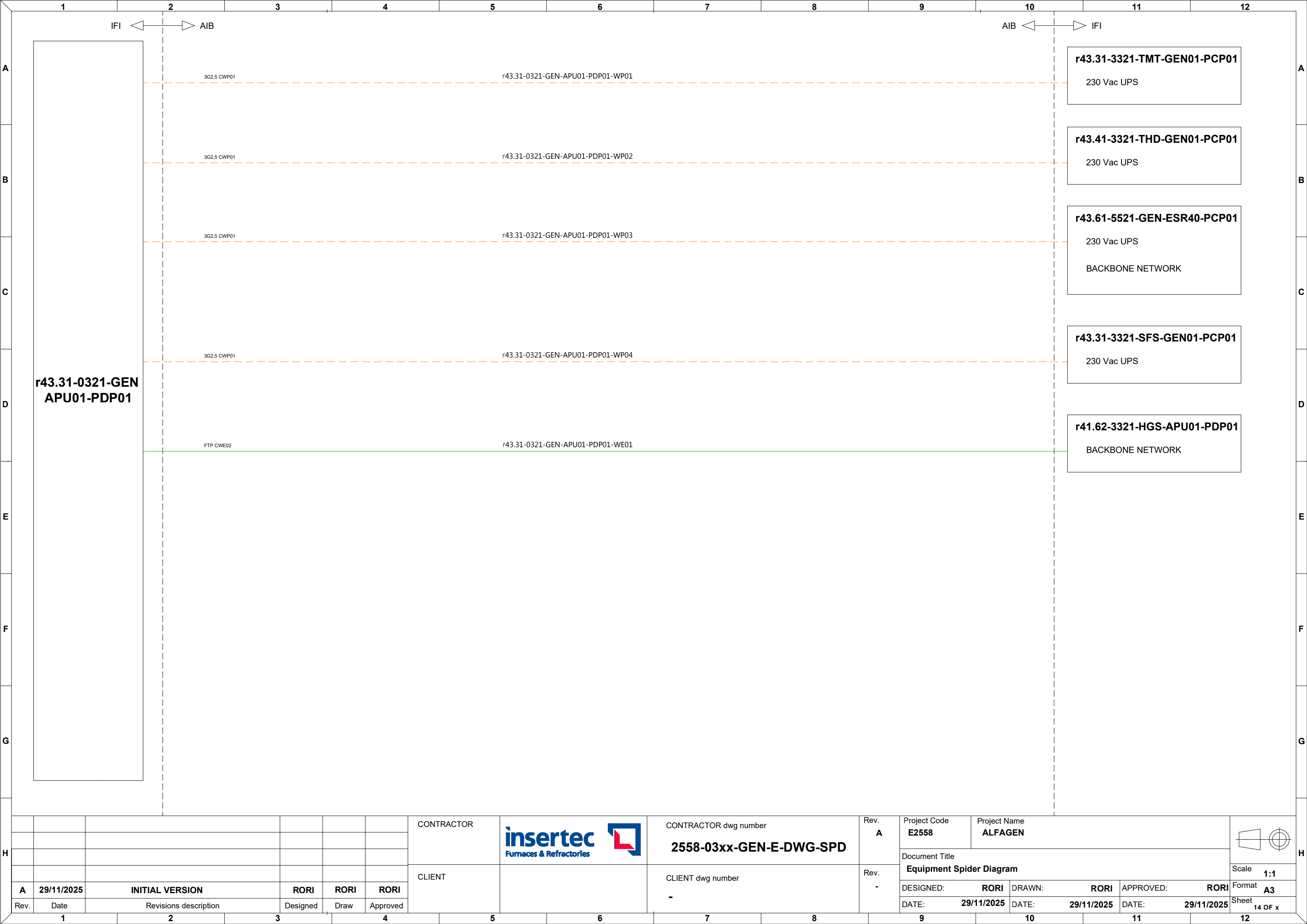
- Power cables
- CWP01: Regular power cables
 - CWP02: Shielded power cable
 - CWP03: Flexible power cables
 - CWP04: Regular high temperature power cables
 - CWP05: Shielded high temperature power cables
 - CWP06: General use power cable
- Instrumentation and control cables
- CWC01: Regular instrumentation control cables
 - CWC02: Shielded instrumentation control cables
 - CWC03: Thermocouple cable
 - CWC04: Flexible instrumentation control cables
 - CWC05: High voltage cables for ignition transformers
 - CWC06: Regular high temperature instrumentation control cables
 - CWC07: Shielded high temperature instrumentation control cables
- Communication cables
- CWE01: Fieldbus communication cable (Inside cabinets)
 - CWE02: Fieldbus communication cable (Outside cabinets)
 - CWE03: Optic fibre communication cable

LEGEND

- 400Vac Power supply
- 400Vac UPS power supply
- 230Vac Power supply
- 230Vac UPS power supply
- Regular control signals
- Analog & shielded signals
- T/C connection
- Communication connection

						CONTRACTOR		CONTRACTOR dwg number	Rev. A	Project Code	Project Name										
										E2558	ALFAGEN										
										Document Title											
						CLIENT		CLIENT dwg number	Rev. -	Equipment Spider Diagram			Scale	1:1							
A	29/11/2025	INITIAL VERSION		RORI	RORI					RORI	DESIGNED: RORI	DRAWN: RORI	APPROVED: RORI	Format	A3						
Rev.	Date	Revisions description		Designed	Draw					Approved											
1			2		3			5		6		7	8		9		10		11		12
12 OF x																					







UPS RACK POWER SUPPLY

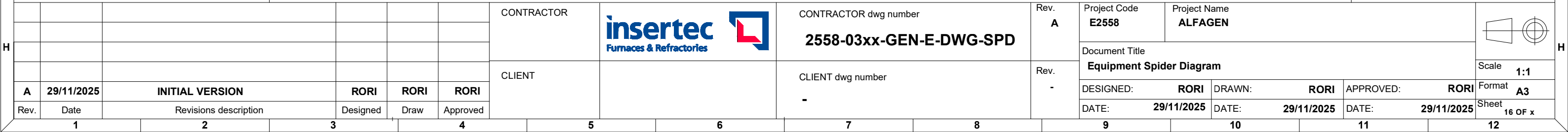
PMS CASTING AREA

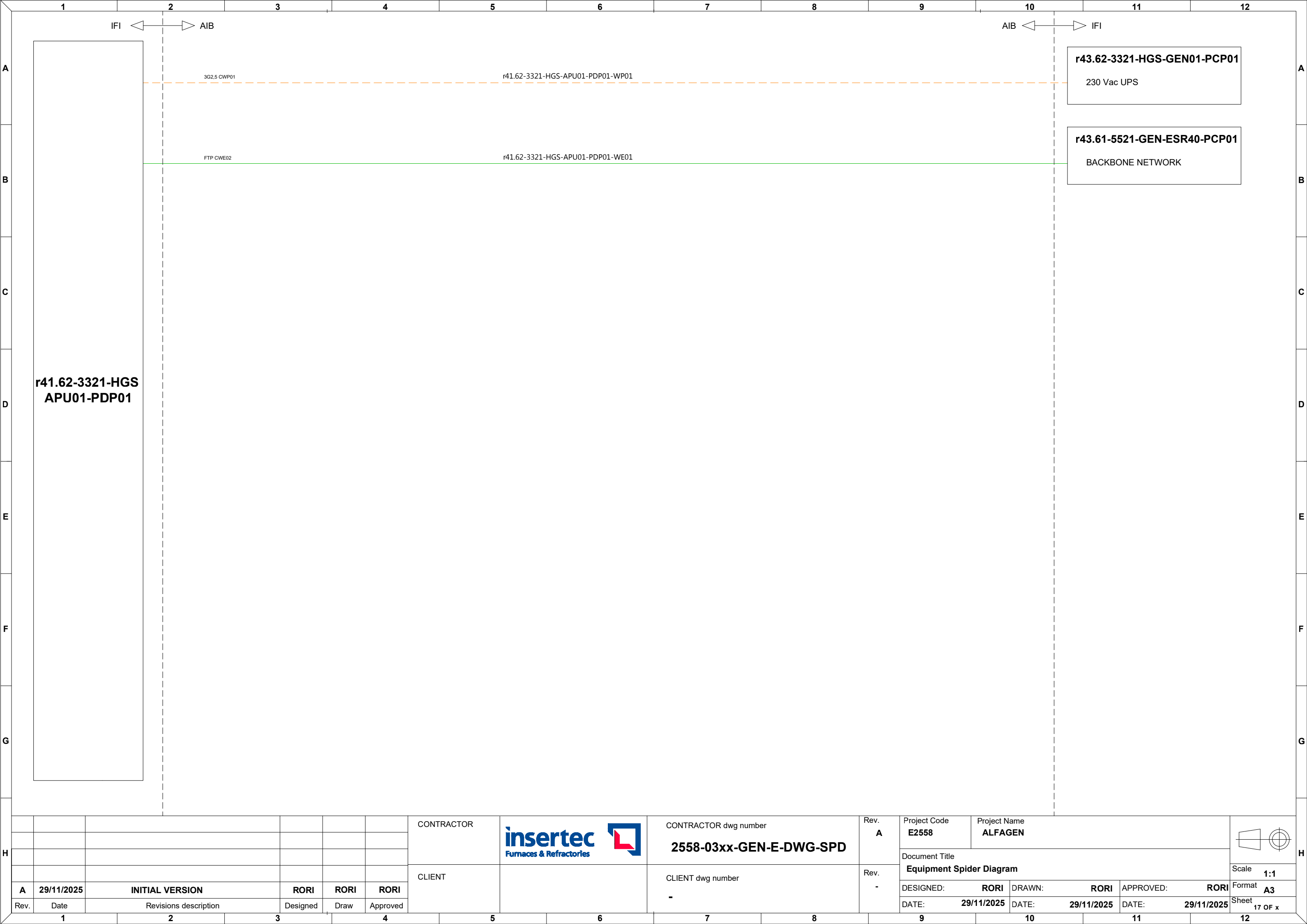
r41.62-3321-HGS-APU01-PDP01


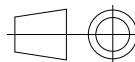
CATEGORY	
Power cables	
	CWP01: Regular power cables
	CWP02: Shielded power cable
	CWP03: Flexible power cables
	CWP04: Regular high temperature power cables
	CWP05: Shielded high temperature power cables
	CWP06: General use power cable
Instrumentation and control cables	
	CWC01: Regular instrumentation control cables
	CWC02: Shielded instrumentation control cables
	CWC03: Thermocouple cable
	CWC04: Flexible instrumentation control cables
	CWC05: High voltage cables for ignition transformers
	CWC06: Regular high temperature instrumentation control cables
	CWC07: Shielded high temperature instrumentation control cables
Communication cables	
	CWE01: Fieldbus communication cable (Inside cabinets)
	CWE02: Fieldbus communication cable (Outside cabinets)
	CWE03: Optic fibre communication cable

LEGEND	
<div></div> 400Vac Power supply	<div></div> Regular control signals
<div></div> 400Vac UPS power supply	<div></div> Analog & shielded signals
<div></div> 230Vac Power supply	<div></div> T/C connection
<div></div> 230Vac UPS power supply	<div></div> Communication connection

						CONTRACTOR	<div><div>insertec</div><div>Furnaces & Refractories</div></div> <div></div>	CONTRACTOR dwg number	Rev. A	Project Code	Project Name						
										E2558	ALFAGEN						
										Document Title							
						CLIENT		CLIENT dwg number	Rev. -	Equipment Spider Diagram						Scale 1:1	
A	29/11/2025	INITIAL VERSION			RORI					RORI	RORI	DESIGNED: RORI	DRAWN: RORI		APPROVED: RORI		Format A3
Rev.	Date	Revisions description			Designed					Draw	Approved	DATE: 29/11/2025	DATE: 29/11/2025		DATE: 29/11/2025		Sheet 15 OF x





						CONTRACTOR		CONTRACTOR dwg number 2558-03xx-GEN-E-DWG-SPD	Rev. A	Project Code E2558	Project Name ALFAGEN															
										Document Title Equipment Spider Diagram			Scale 1:1													
A	29/11/2025	INITIAL VERSION		RORI	RORI					RORI	DESIGNED: RORI	DRAWN: RORI	APPROVED: RORI		Format A3											
Rev.	Date	Revisions description		Designed	Draw	Approved	CLIENT	CLIENT dwg number -	Rev. -	DATE: 29/11/2025	DATE: 29/11/2025	DATE: 29/11/2025	Sheet 17 OF x													
1		2		3		4				5		6		7		8		9		10		11		12		

UPS RACK POWER SUPPLY

CASTING LINE #02


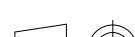
r44.31-0322-GEN-APU01-PDP01

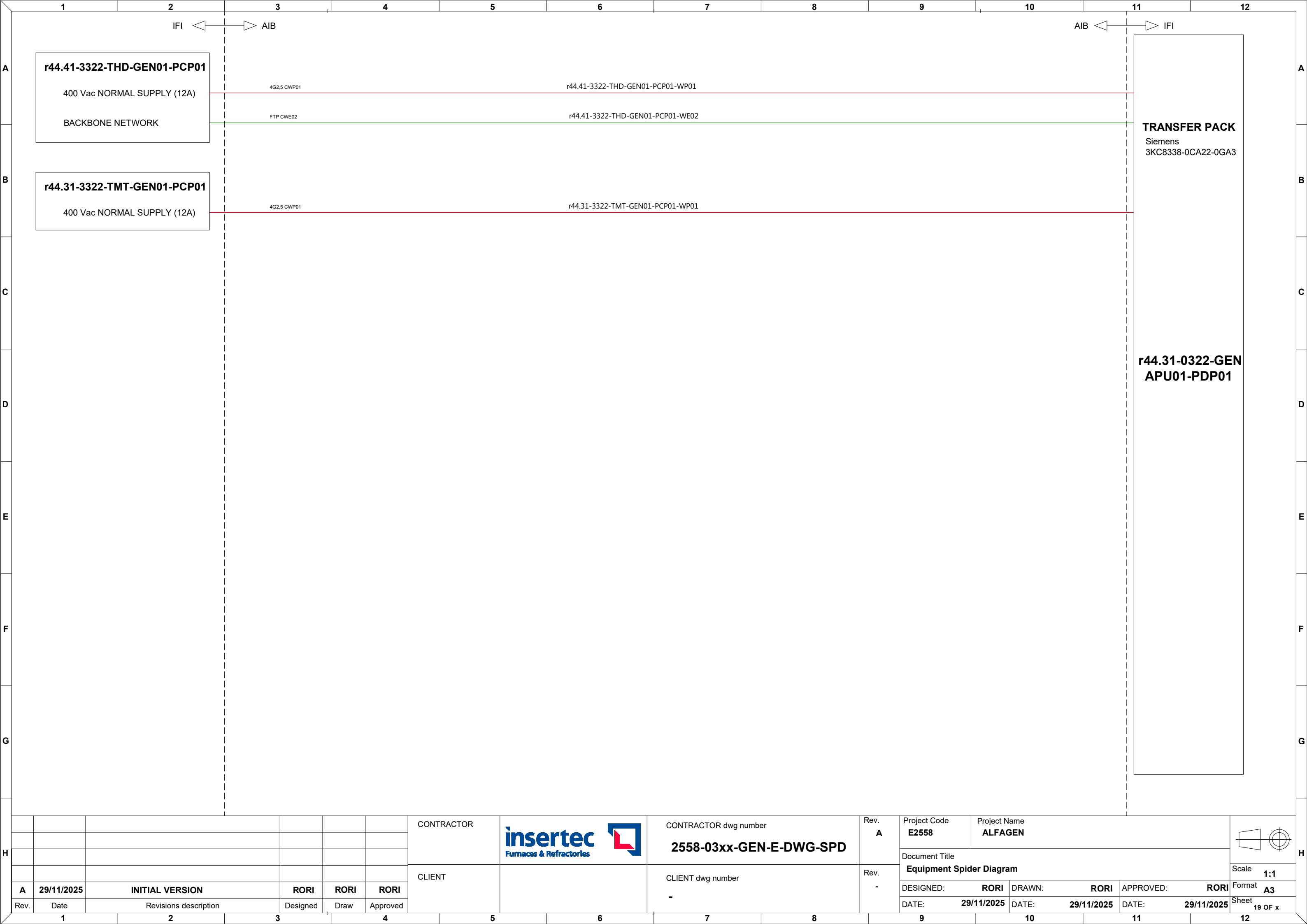
CATEGORY

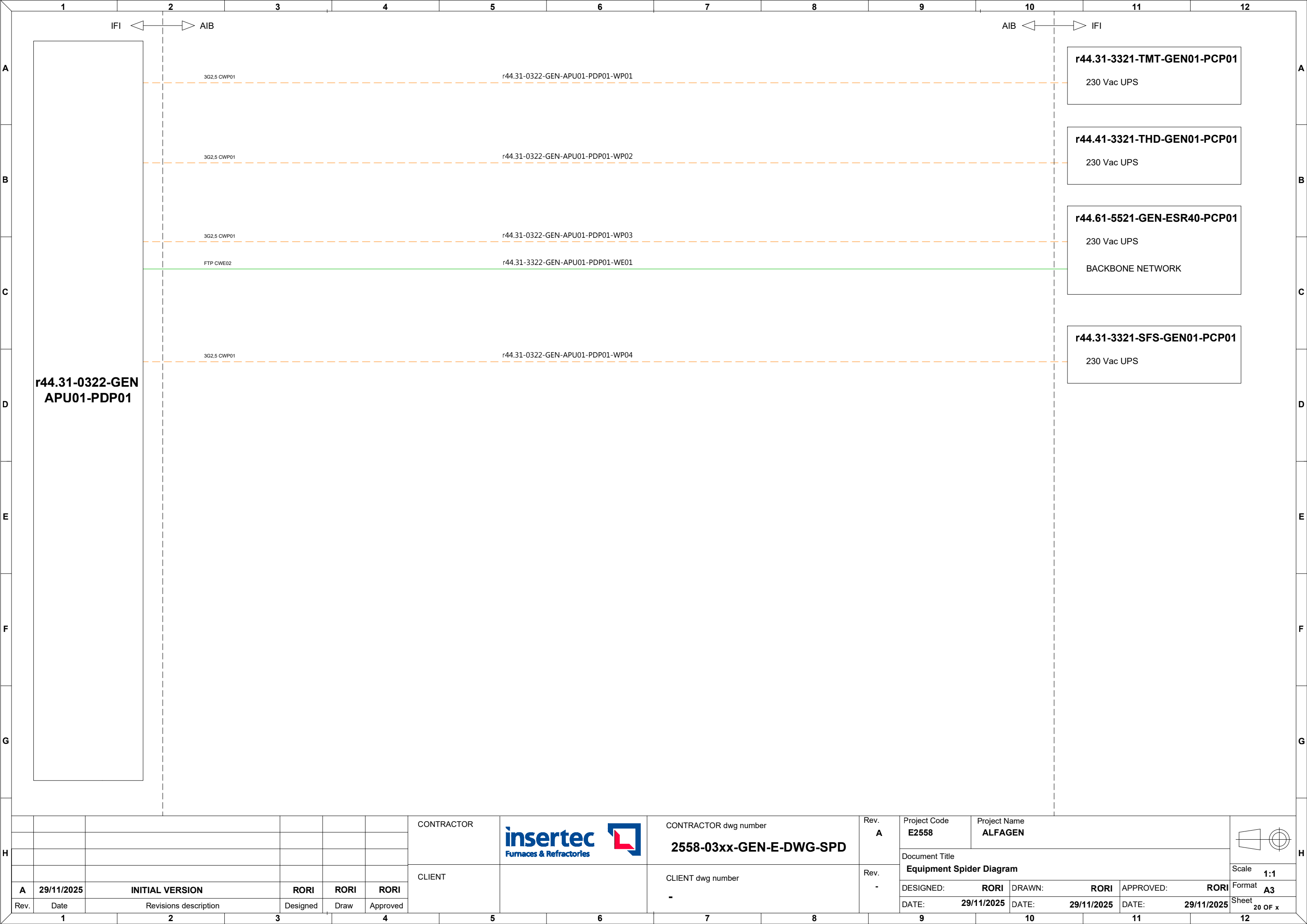
- Power cables
- CWP01: Regular power cables
 - CWP02: Shielded power cable
 - CWP03: Flexible power cables
 - CWP04: Regular high temperature power cables
 - CWP05: Shielded high temperature power cables
 - CWP06: General use power cable
- Instrumentation and control cables
- CWC01: Regular instrumentation control cables
 - CWC02: Shielded instrumentation control cables
 - CWC03: Thermocouple cable
 - CWC04: Flexible instrumentation control cables
 - CWC05: High voltage cables for ignition transformers
 - CWC06: Regular high temperature instrumentation control cables
 - CWC07: Shielded high temperature instrumentation control cables
- Communication cables
- CWE01: Fieldbus communication cable (Inside cabinets)
 - CWE02: Fieldbus communication cable (Outside cabinets)
 - CWE03: Optic fibre communication cable

LEGEND

- 400Vac Power supply
- 400Vac UPS power supply
- 230Vac Power supply
- 230Vac UPS power supply
- Regular control signals
- Analog & shielded signals
- T/C connection
- Communication connection

						CONTRACTOR		CONTRACTOR dwg number	Rev. A	Project Code	Project Name			
										E2558	ALFAGEN			
										Document Title				
						CLIENT		CLIENT dwg number	Rev. -	Equipment Spider Diagram			Scale 1:1	
A	29/11/2025	INITIAL VERSION		RORI	RORI					RORI	DESIGNED: RORI	DRAWN: RORI	APPROVED: RORI	Format A3
Rev.	Date	Revisions description		Designed	Draw					Approved	DATE: 29/11/2025	DATE: 29/11/2025	DATE: 29/11/2025	Sheet 18 OF x





UPS RACK POWER SUPPLY

CASTING LINE #03


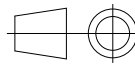
r45.31-0323-GEN-APU01-PDP01

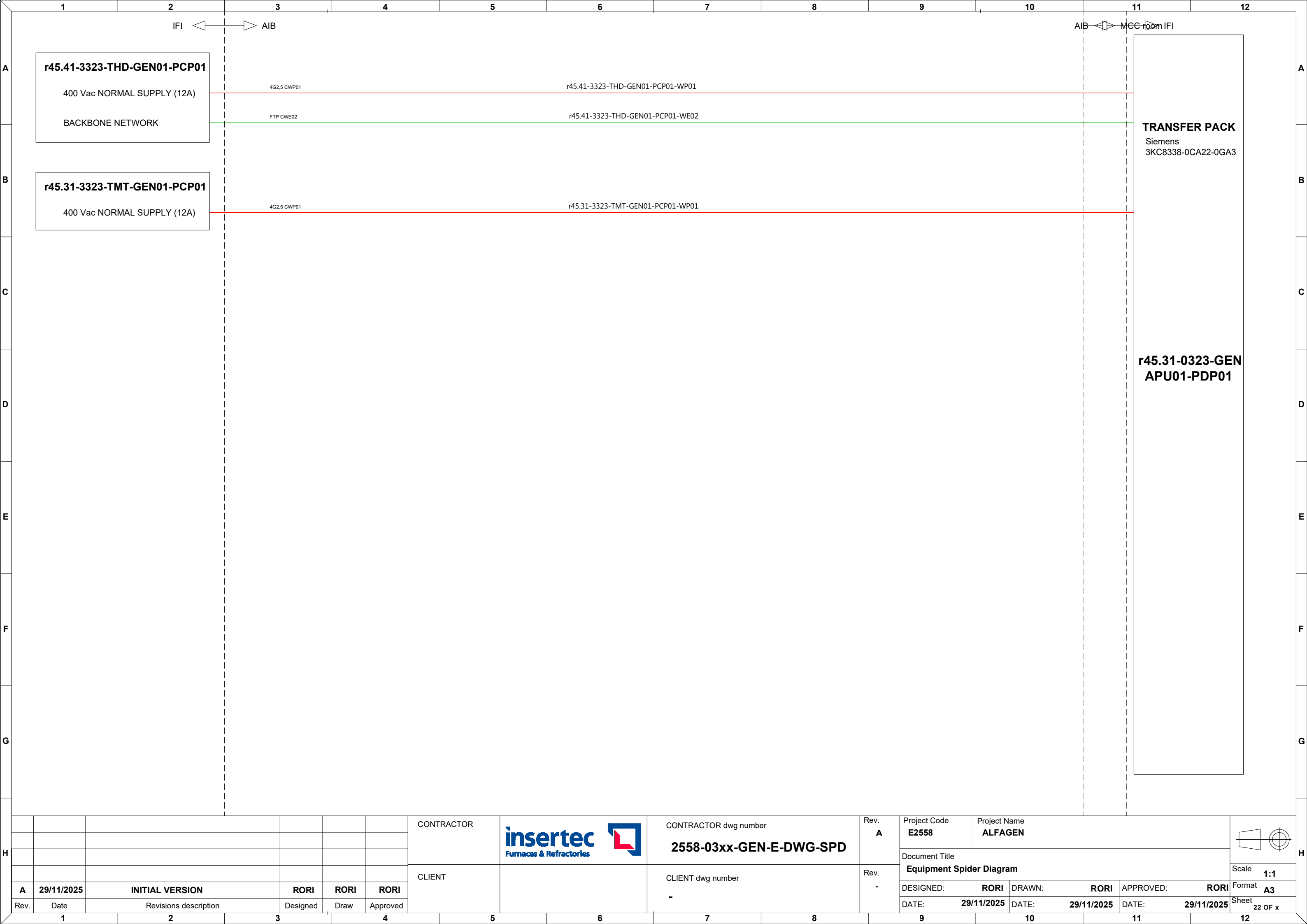
CATEGORY

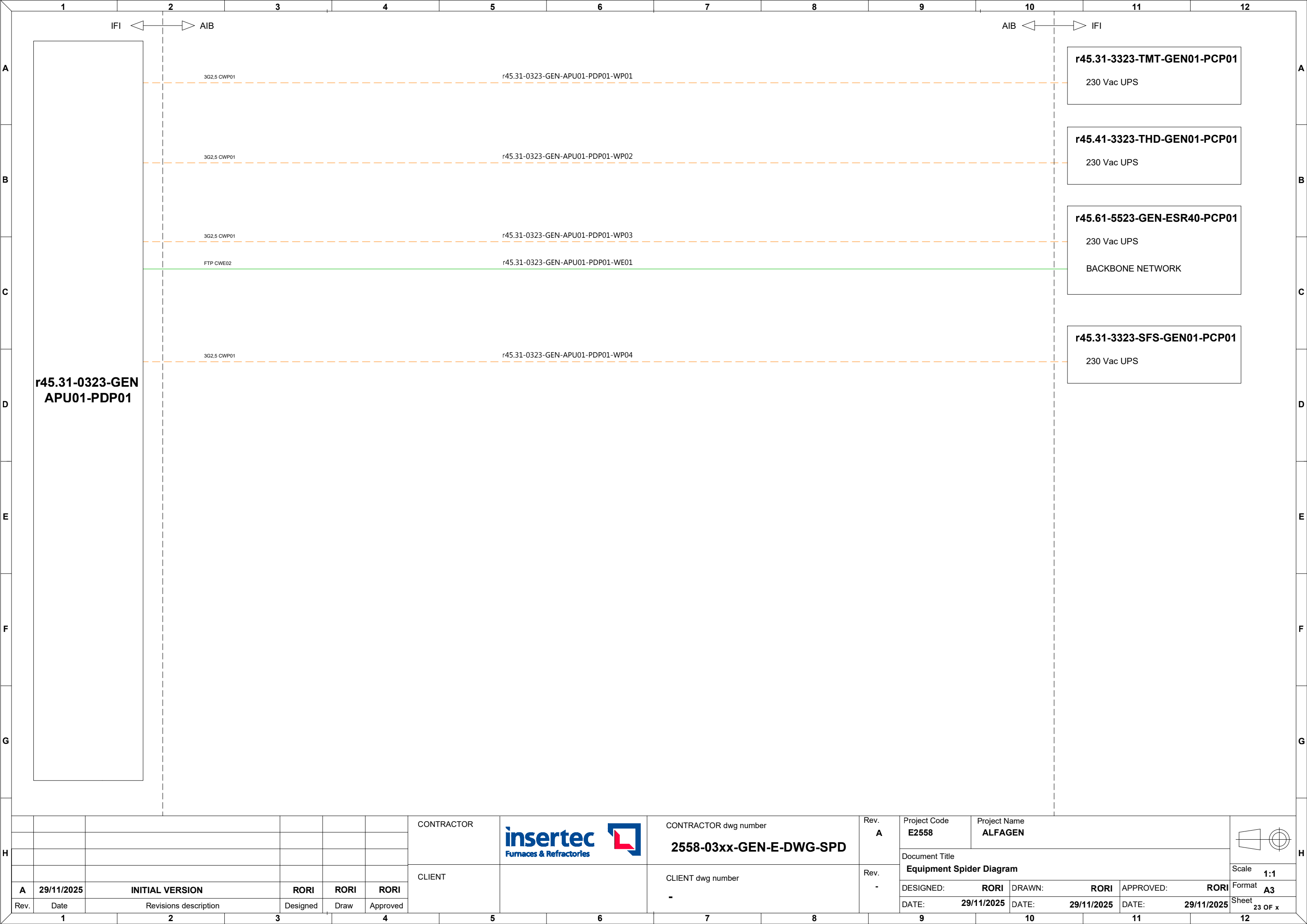
- Power cables
- CWP01: Regular power cables
 - CWP02: Shielded power cable
 - CWP03: Flexible power cables
 - CWP04: Regular high temperature power cables
 - CWP05: Shielded high temperature power cables
 - CWP06: General use power cable
- Instrumentation and control cables
- CWC01: Regular instrumentation control cables
 - CWC02: Shielded instrumentation control cables
 - CWC03: Thermocouple cable
 - CWC04: Flexible instrumentation control cables
 - CWC05: High voltage cables for ignition transformers
 - CWC06: Regular high temperature instrumentation control cables
 - CWC07: Shielded high temperature instrumentation control cables
- Communication cables
- CWE01: Fieldbus communication cable (Inside cabinets)
 - CWE02: Fieldbus communication cable (Outside cabinets)
 - CWE03: Optic fibre communication cable

LEGEND

- 400Vac Power supply
- 400Vac UPS power supply
- 230Vac Power supply
- 230Vac UPS power supply
- Regular control signals
- Analog & shielded signals
- T/C connection
- Communication connection

						CONTRACTOR		CONTRACTOR dwg number	Rev. A	Project Code	Project Name			
										E2558	ALFAGEN			
										Document Title				
						CLIENT		CLIENT dwg number	Rev. -	Equipment Spider Diagram			Scale 1:1	
A	29/11/2025	INITIAL VERSION		RORI	RORI					RORI	DESIGNED: RORI	DRAWN: RORI	APPROVED: RORI	Format A3
Rev.	Date	Revisions description		Designed	Draw					Approved	DATE: 29/11/2025	DATE: 29/11/2025	DATE: 29/11/2025	Sheet 21 OF x







r46.31-0324-GEN-APU01-PDP01

LEGEND

—	400Vac Power supply	—	Regular control signals
- - -	400Vac UPS power supply	- - -	Analog & shielded signals
—	230Vac Power supply	—	T/C connection
- - -	230Vac UPS power supply	—	Communication connection

H							CONTRACTOR			CONTRACTOR dwg number		Rev. A	Project Code E2558	Project Name ALFAGEN									
							CLIENT			CLIENT dwg number			Rev. -	Document Title Equipment Spider Diagram			Scale 1:1						
	A	29/11/2025	INITIAL VERSION			RORI	RORI	RORI	-		DESIGNED: RORI	DRAWN: RORI		APPROVED: RORI	Format A3								
	Rev.	Date	Revisions description			Designed	Draw	Approved			DATE: 29/11/2025	DATE: 29/11/2025		DATE: 29/11/2025	Sheet 24 OF x								
	1		2		3		4		5		6		7		8		9		10		11		12

